

Direct Port IO Under Windows NT

Warning !

This DLL and driver achieve direct access to ports in your PC by defeating the Windows NT™ hardware security mechanism. This capability allows you full access to any IO port. Indiscriminate use of these capabilities may lead to disastrous results. Hewlett-Packard will not take any responsibility for anything that results in a actions detrimental to your PC's health.

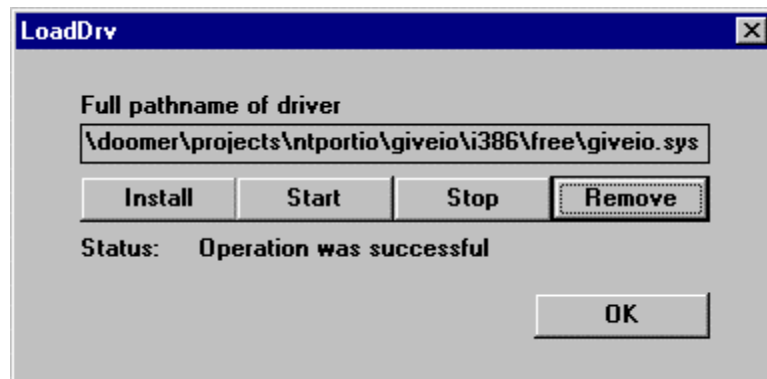
Tested Systems

The only system I have tested this on is Windows NT™ 3.51.

Using NT Port IO

Installing the Driver

To use the capabilities in the PeekPoke DLL, you must first install a driver named 'giveio.sys' that opens up direct port access. There is a utility called 'loaddrv' that allows you to do this. You must be logged into an account that runs with system administrator privileges to load a driver. The following is a screen shot showing how to use the driver loader:



Type in the fully-qualified path to the driver file you want to load. Click the 'Install' button. You should see an 'Operation Successful' message.

Click the 'Start' button. You should see an 'Operation Successful' message.

When you want to disable access to IO ports, click the 'Stop' button.

When you want to remove the driver from your operating system, click the 'Remove' button.

An Example

This is a VEE program to test the DLL by clicking the built-in speaker on your PC.

